



# Matamata Christian School

## FLOWER DAY

### Rules for Flower Day

- \* **Children should bring only raw materials to school.** Vegetables must not be pre-cut and flower arrangements should not be prepared at home beforehand.
  - \* We do not want children practicing or preparing at home as this invites too much parent input and is unfair to other children. (The only exception to this is miniature gardens). Parents may suggest ideas but not help children prepare or practice.
  - \* The fruit and vege animal category is being replaced with the miniature garden for the Y1 – 3 Junior children. The reason behind this is that staff do not want these younger ones using knives in an unsafe way to cut up their fruit and vegies.
  - \* Each child is required to enter two of the possible categories for their age group.
  - \* The miniature garden roasting pan size is 30cm to 40 cm.
- 

### Junior School: Yrs 1 - 3

#### **CLASS # 1 SANDSAUCER**

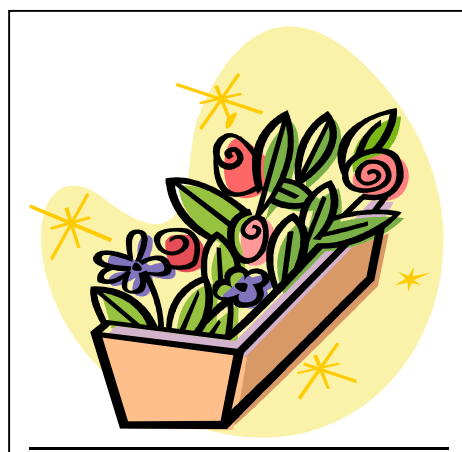
A saucer with your name clearly marked underneath. We will be using sand or vaseline this year. Plenty of small flowers and petals of all sizes. The sand (if used) is not supposed to be visible.

#### **CLASS # 2 ARRANGEMENT in an UNUSUAL CONTAINER**

Arrangement of blooms etc.

#### **CLASS # 3 MINIATURE GARDEN**

To be made in a roasting pan or similar. Gardens may be practiced at home, disassembled and reassembled again at school. The pan should not be bigger than 40cm. Garden to be made from natural materials, **no artificial flowers please.** **Cars/animals/lego figures are allowed.** Mirror or foil can be used for stream or pond effect.



## Middle School: Yrs 4 – 6

### CLASS # 1 MINIATURE GARDEN

To be made in a roasting pan or similar. Gardens may be practiced at home, disassembled and reassembled again at school. The pan should not be bigger than 40cm. Garden to be made from natural materials, **no artificial flowers please. Cars/animals/lego figures are allowed.** Mirror or foil can be used for stream or pond effect.

### CLASS # 2 VEGETABLE AND FRUIT NOVELTY

### CLASS # 3 ARRANGEMENT in an UNUSUAL CONTAINER

Arrangement of blooms etc.

## Senior School: Yrs 7 - 8

### CLASS # 1 MINIATURE GARDEN

To be made in a roasting pan or similar. Gardens may be practiced at home, disassembled and reassembled again at school. The pan should not be bigger than 40cm. Garden to be made from natural materials, **no artificial flowers please. Cars/animals/lego figures are allowed.** Mirror or foil can be used for stream or pond effect.

### CLASS # 2 VEGETABLE AND FRUIT NOVELTY

### CLASS # 4 RESTAURANT TABLE CENTREPIECE

Arrangement in a container. Completed arrangements to be no higher than 20cm. To be done at school.

